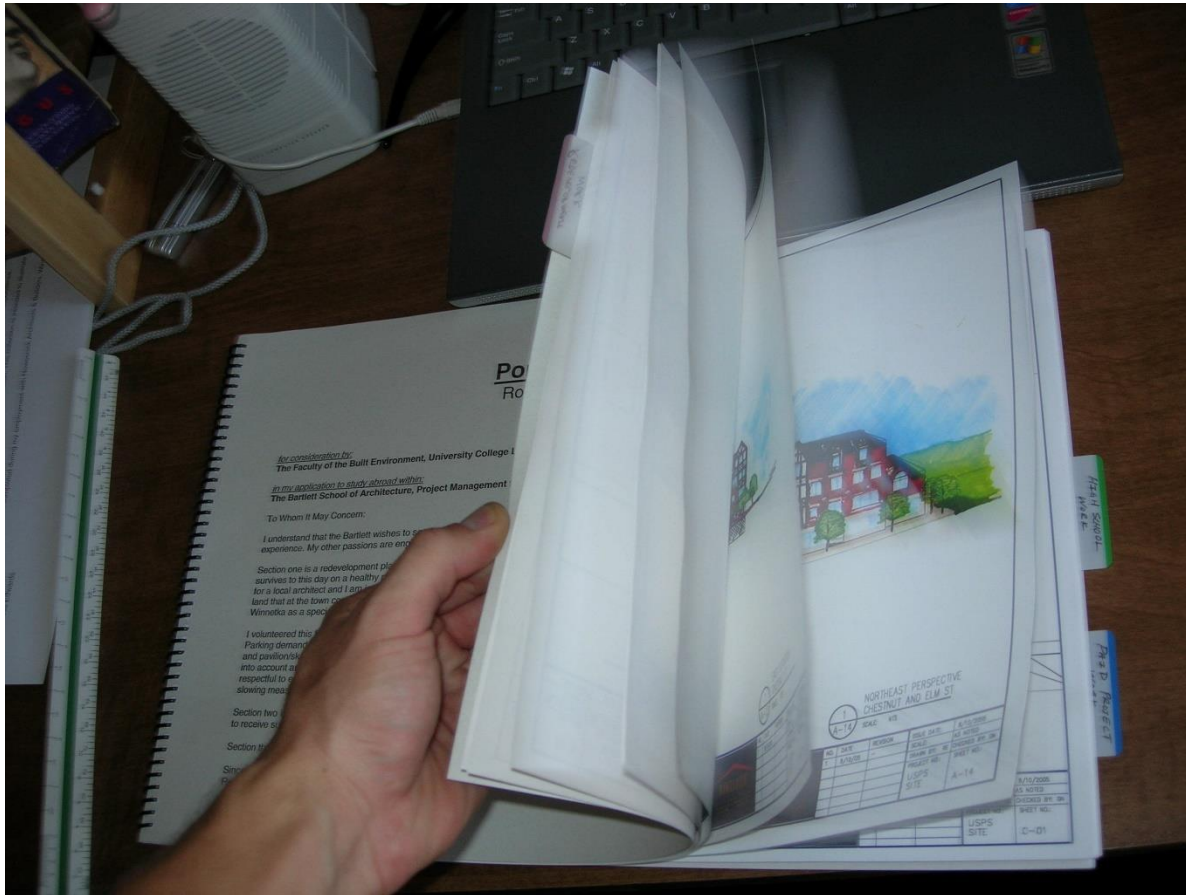


# Architectural Exemplars



# The Cornish Vernacular



# The Cornish Vernacular



# Mevagissey vernacular



# Portmellon



*It's not pretty but it'll do.*

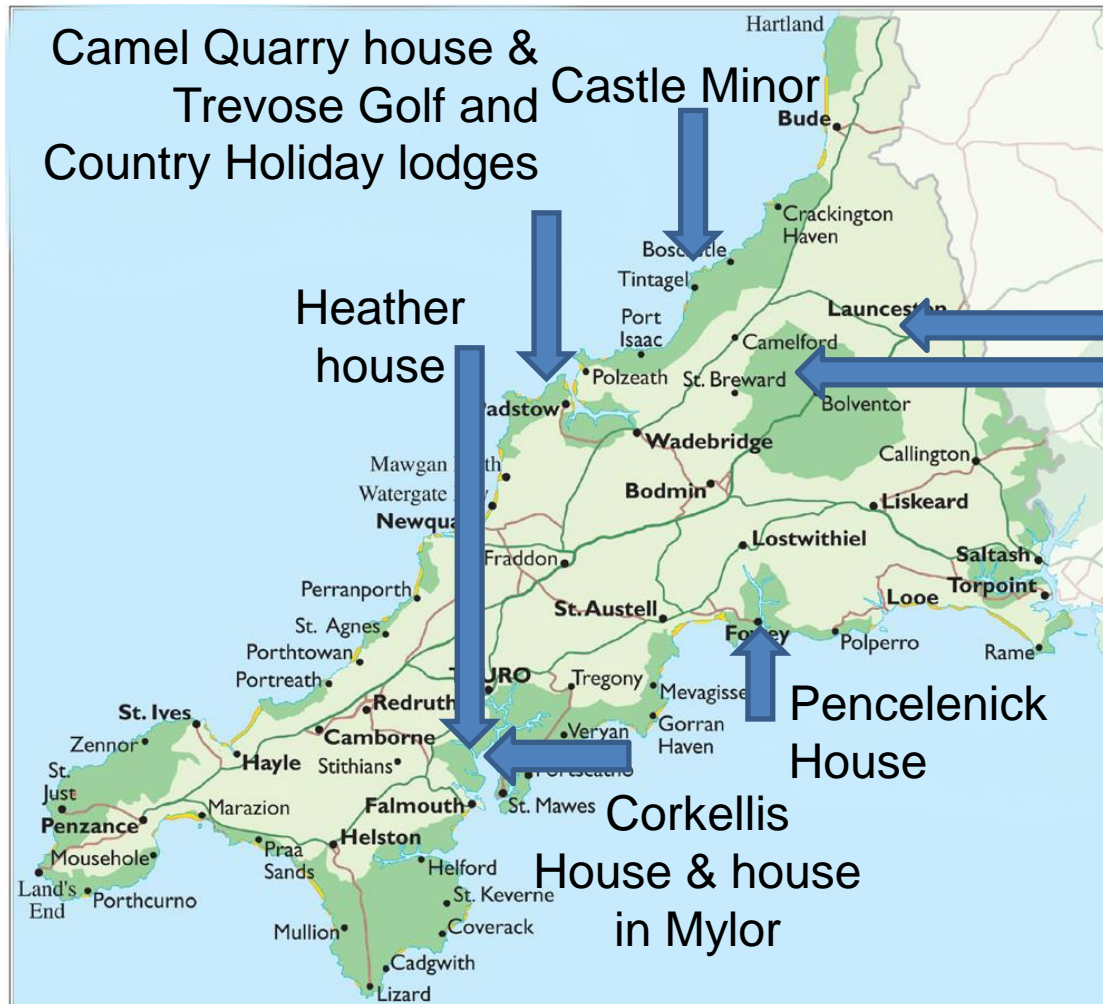
*Well at least it's not concrete and glass.*



# Concrete and glass in Cornwall



# Locations in Cornwall





# Quarry House, Padstow - Maclean Quinlan (2009)



# House near Bodmin (1961) after Frank Lloyd Wright



# Pencalenick House, Fowey, Cornwall (2006), Seth Stein Architects



# House in Mylor (2000), Poynton Bradbury Wynter Cole Architects Limited



# Heather House Tremoughdale Falmouth (2011), Guy Greenfield architect



# Corkellis House, Trescobeas, Falmouth (2010), Own build - Kathryn Tyler



# Stone and timber house, Constantine by AJC architects



# Castle Minor, Tintagel - CSA architects (2011)





# Proposal for bermed house on Steep House paddock (2012)



# Gate House, Chapel Point - John Campbell (1935)



# Harlequin, Constantine- Catchfrench Design Architects (2007)



The design followed a study of the local vernacular provides that the most exciting house in Constantine Bay is that of Trethias Cottage at Treyarnon Bay designed by Charles Voysey and commissioned by Mr Cavendish's great aunt.

Given this background and the intention to provide an appropriate family house for Harlequin, a design has been developed which follows the principles of Voysey's treatment of simple rectangular buildings with fragmented elevational treatments, particularly good chimney stacks and all covered by a well pitched natural slate roof. The design of new Harlequin reflects this concept whilst not in any way being a pastiche of other designs of Mr Voysey.



# New build in Launceston, E L Greening (2013)



# Buildings from further afield



# Island house/studio on Belle-ile-en-Mer Brittany by Opus 5 (2011)



# Underhill, near Holmfirth, Yorkshire, UK



The first “modern” earth-sheltered house in Britain and the home of its architect Arthur Quarmby, a pioneer of earth-sheltered buildings. The house features earth embankments, turf roof, lots of insulation and a visual impact that not even the pickiest of neighbors could fault



An earth-sheltered dwelling in the former walled garden of the Listed building, Barnsdale Hall, overlooking Europe's largest man made reservoir located in Rutland. Search architects, Spalding (2013)





# Further afield - Leatherlands Home, Crawley Edge (2009) Building Excellence award



# Further afield - Ansty, Dorset (1960s), David Levitt

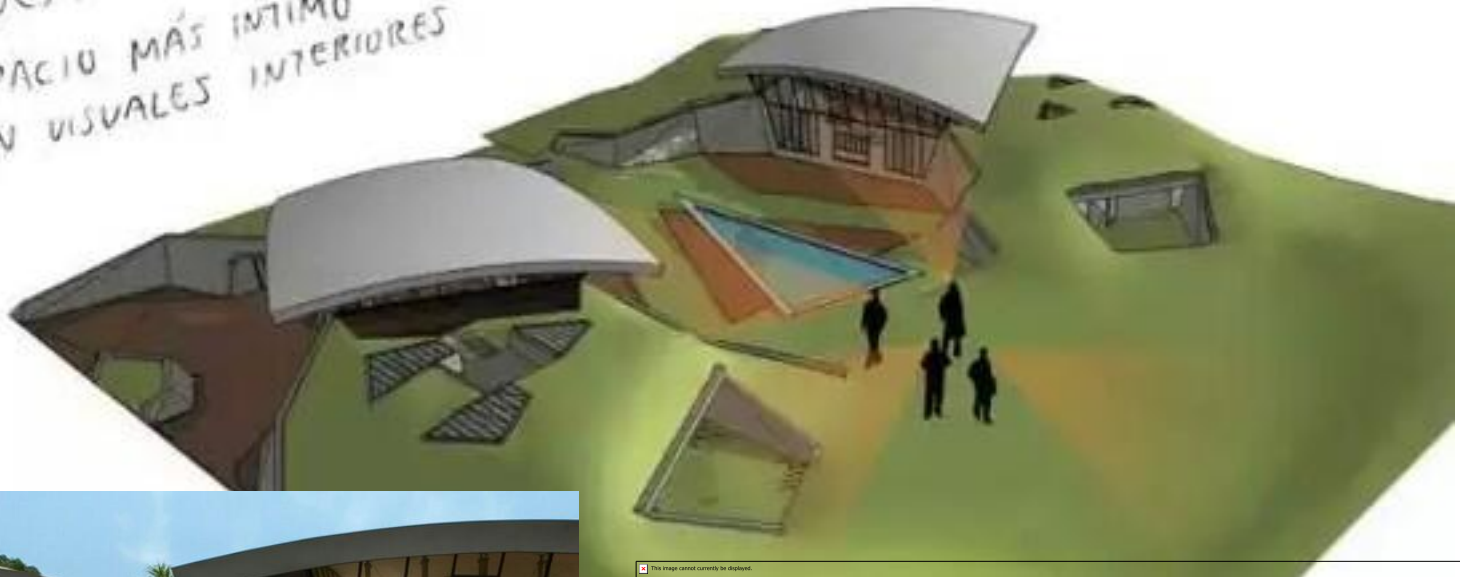


# Much further afield - Mount Hotham, Austria (2012) Giovanni D'Ambrossio



# Much further afield - Bauen architects - hillside homes built into the landscape - Paraguay (2013)

DESPUÉS:  
ESPACIO MÁS ÍNTIMO  
CON VISUALES INTERIORES



# Much further afield! - Villa Ronde, Japan (2011) Ceil Rouge



# Commercial buildings



# David Mellor cutlery Peak District Park (1990)



# Page & Park HQ, Loch Lomond (2007)





# Reminders of a Cornish heritage

Former Seamans'  
Mission, Fowey



Kestle Barton  
Helford



Chapel point

